

Interrogating Interruptions

A Poster Series

by

Sama Resource Group
for Women and Health

This series of interlinked posters seeks to reflect on and deepen the understanding of mental health as embedded in socio-political realities.

It explores the intersections of gender, poverty, caste, and sexuality leading to everyday experiences of violence, surveillance and control of mobility, education, and work.

Other dimensions represented here are access to information, care and psychological support and the importance of accessible, safe and supportive spaces, while affirming the agency and resistance of those in situations of mental distress/ aspiring for mental well being.

The series complements the findings from the research on mental health of young women by Sama in the published report, **Interrogating Interruptions**.

Art and Design by Alia Sinha

We would like to offer our sincere thanks to the **American Jewish World Service (AJWS)** for their support to this initiative.

The information provided in this report is for wider dissemination.
It may be used by anyone with due acknowledgment to Sama.

For more information please write to:
Sama - Resource Group for Women and Health
B-45, Second Floor
Shivalik Main Road
Malviya Nagar
New Delhi – 110017

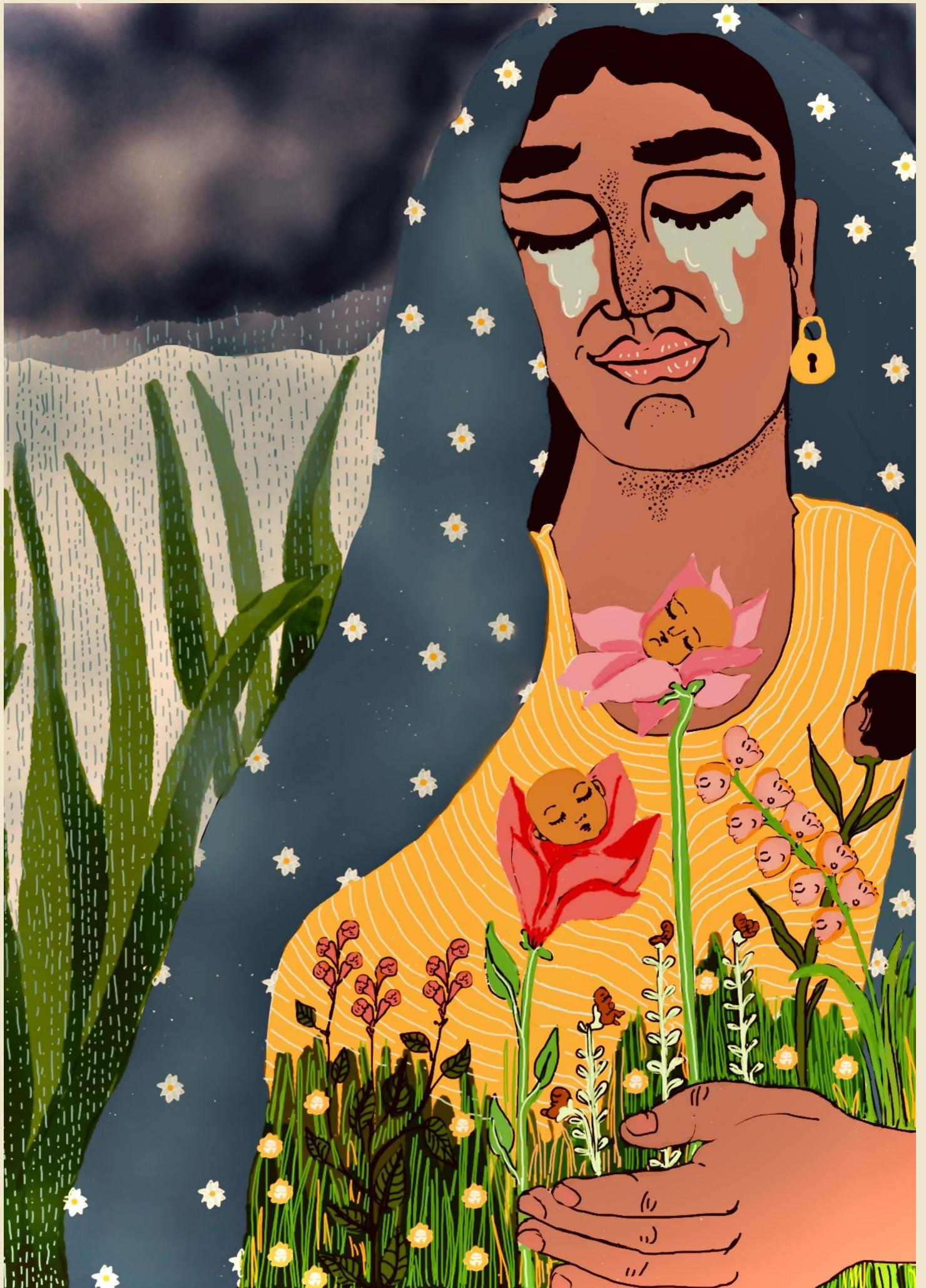
Ph: 011- 26692730 / 40666255

Email: sama.womenshealth@gmail.com / sama.genderhealth@gmail.com

Website: www.samawomenshealth.in

Facebook Page: Sama - Resource Group for Women and Health













**Sama Resource Group
for Women and Health**